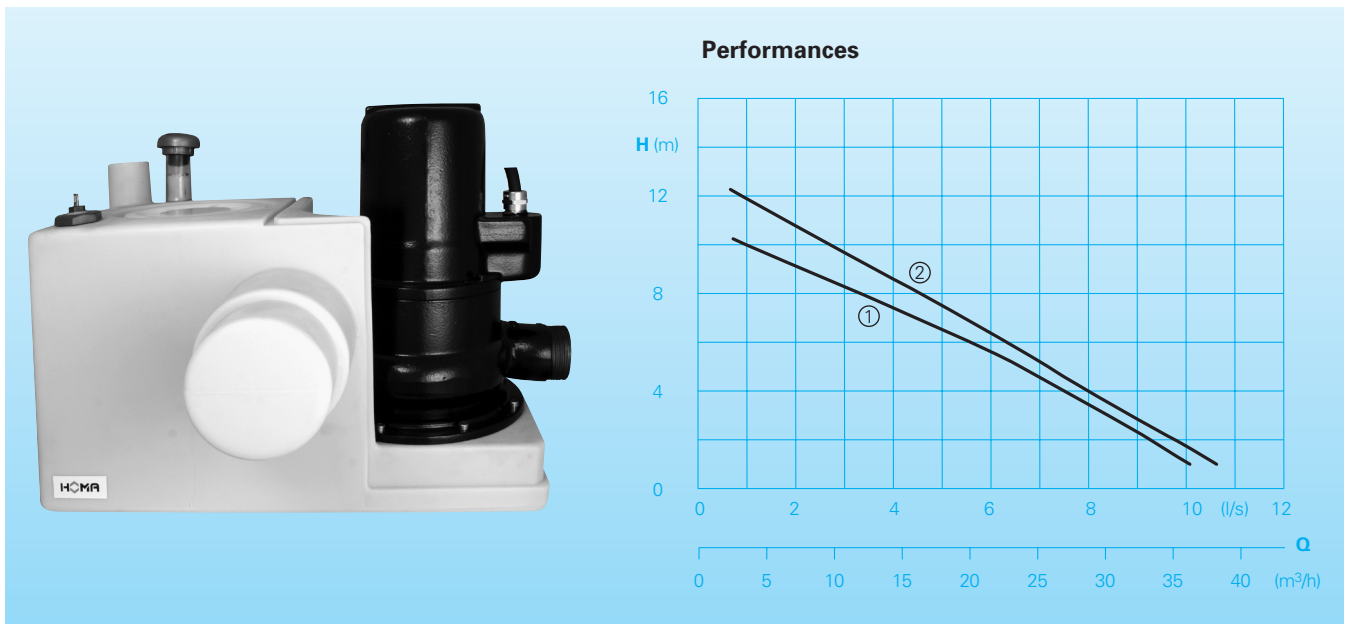


Sewage disposal unit

Sanipower - TP30V17



Application

Sanitary installations with WC, hand basins, washing machines and showers in basement apartments or cellars which are below sewer backflush level require the installation of a lifting station. Sanipower TP30V17 is also ideal for subsequent installation of sanitary facilities.

Pumped liquid: Drainage water, waste water or sewage.

Max. liquid temperature: 35°C, short term up to 60°C.

Operation: Intermittent.

Design

Compact sewage disposal unit consisting of:

Collecting tank: Odour and gastight composite collection tank. Max. utility volume 11 l. DN 100 horizontal, inlet height 180 mm. Vertical inlet DN 50 on the top of the tank. Air vent DN 25 vertical. Cleaning cover with screw cap.

Pump: Single stage centrifugal pump with horizontal discharge and vortex impeller. Spherical clearance 30 mm. Discharge connection BSP 2" M.

Motor: Fully submersible, pressure tight electric motor, oil filled. Insulation class H. Degree of protection IP 68. Stainless rotor shaft, pre-lubricated bearings.

Technical Data

Curve No.	Pumpentyp	Motor-input P ₁ (kW)	Motor-output P ₂ (kW)	Nennstrom (A)	Gewicht (kg)
①	Sanipower - TP30V17/2W	1,6	1,2	7,6	32
②	Sanipower - TP30V17/2D	1,6	1,2	2,9	32

Speed: 2900 rpm | Model W: 230V/1Ph 50Hz | Model D: 400V/3Ph 50Hz

Materials

Collecting tank	Composite
Pump housing, motor housing, impeller	Cast iron
Rotor shaft, screws	EN-GJL-250
Steal kit	Stainless steel
	Perbonane

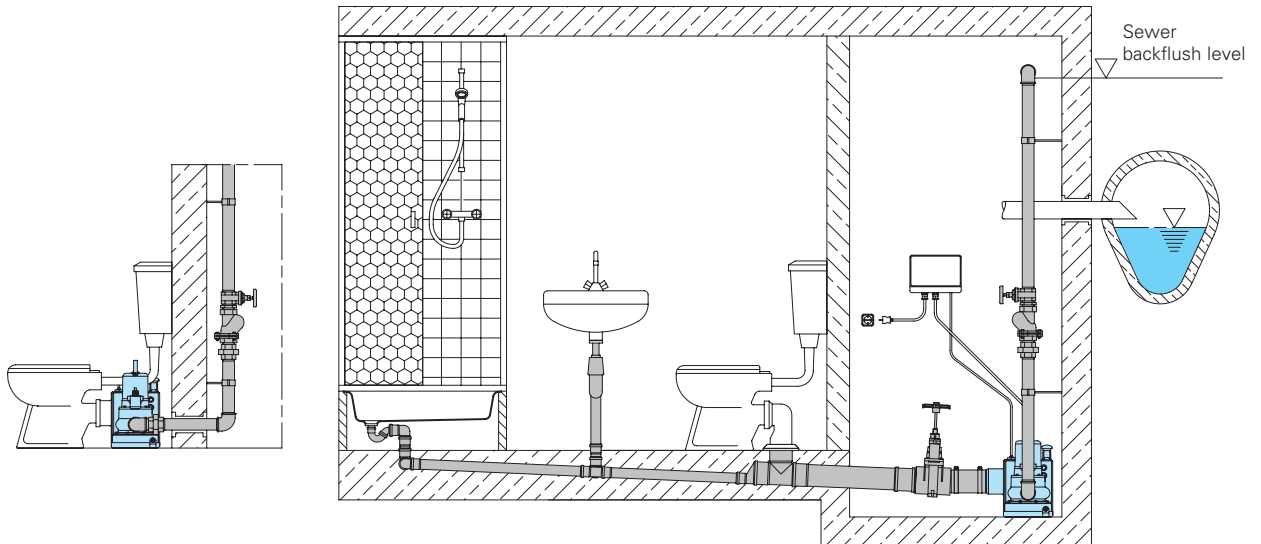
Seals: Combination of mechanical seals (siliconcarbide / siliconcarbide) and lip seals in a separate oil chamber.

Control box: Pneumatic level control with pressure switch. Electronic control box, motor over run period. Overload protection. Temperature control of the winding with automatic motor restart. Capacitor 30 µF (Model W)

Equipment supplied

Tank with pump, pneumatic electronic control box, 2 m of cable H07RN-F4G1,5 and plug.

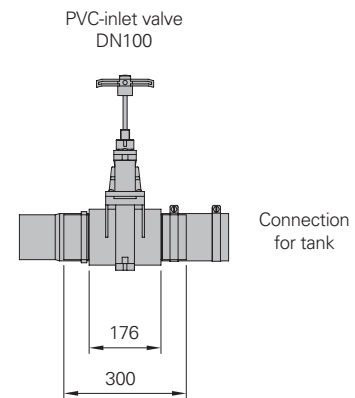
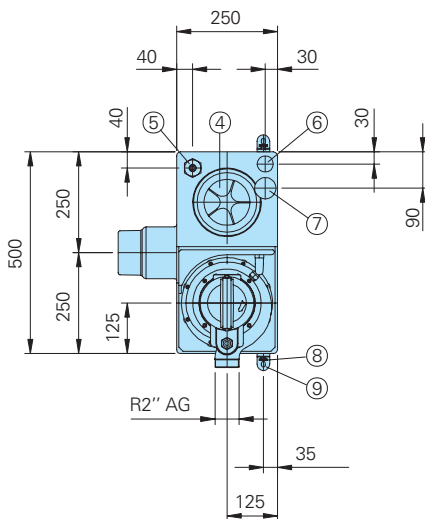
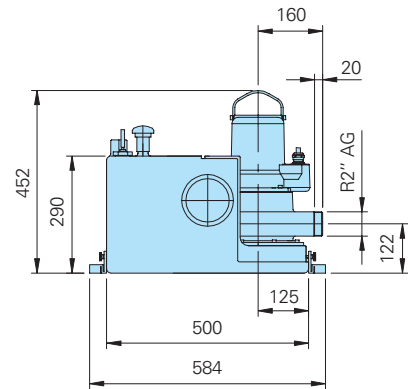
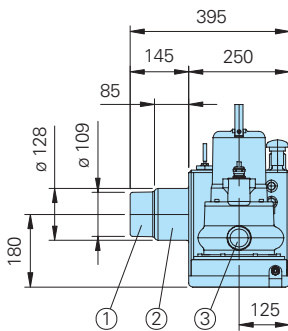
Installation



Zubehör

Part Description	Dimension	Part No.
Gasket for WC-direct connection	dia. 134/87	2725134
PVC-inlet valve	DN 100	2214110
	DN 150	2214160
90° galvanized elbow	BSP 2" F	2113606
Cast iron non-return valve	BSP 2" F	2212903
Bronze gate valve	BSP 2" F	2216020
Galvanized union piece	BSP 2" M/F	2114311
AL 3 alarm control panel with water level sensor for the collecting tank		1586143

Dimension (all dimension in mm)



- ① Inlet for plastic pipe DN100
- ② WC-direct connection
- ③ Connection for discharge pipe BSP 2" M
- ④ Cleaning cover
- ⑤ Connection for pneumatic level control
- ⑥ Inlet DN50
- ⑦ Air vent vap
- ⑧ 2 x Knurled screws
- ⑨ Tank fixing point



HOMA Pumpenfabrik GmbH
 Postfach 2263, D-53814 Neunk.-Seelscheid
 Tel. +49 (0) 22 47 / 702-0, Fax +49 (0) 22 47 / 702-44
 e-mail: info@homa-pumpen.de
 www.homapumpen.de